

# MONTHLY MEMBERSHIP PROGRESS REPORT

District 3233G1

Results as of: 4/30/2024

GMT:

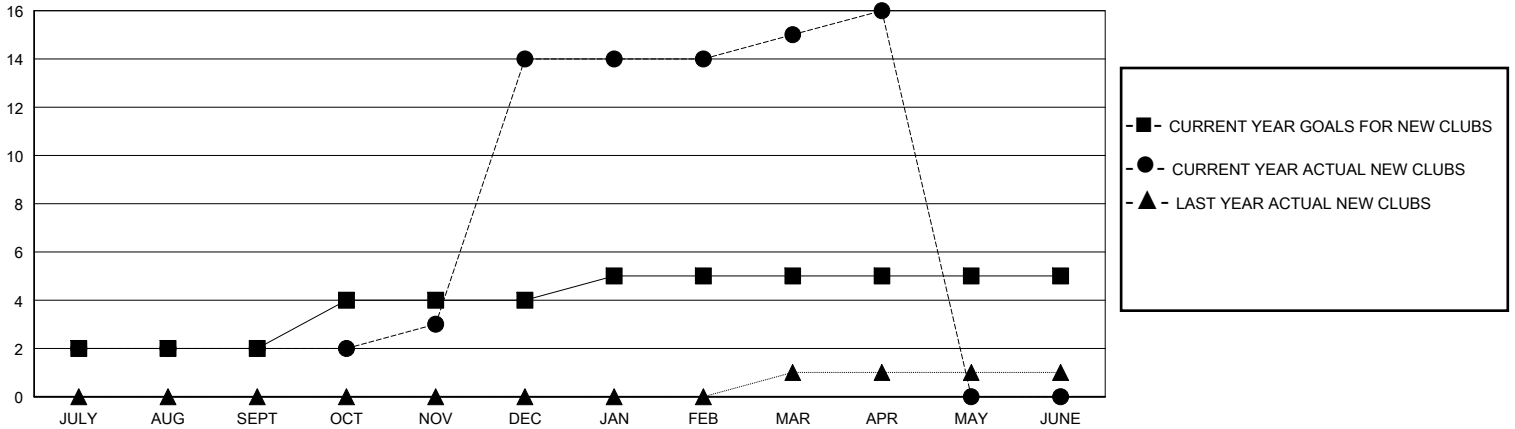
LOCATION INDIA

GMT CA

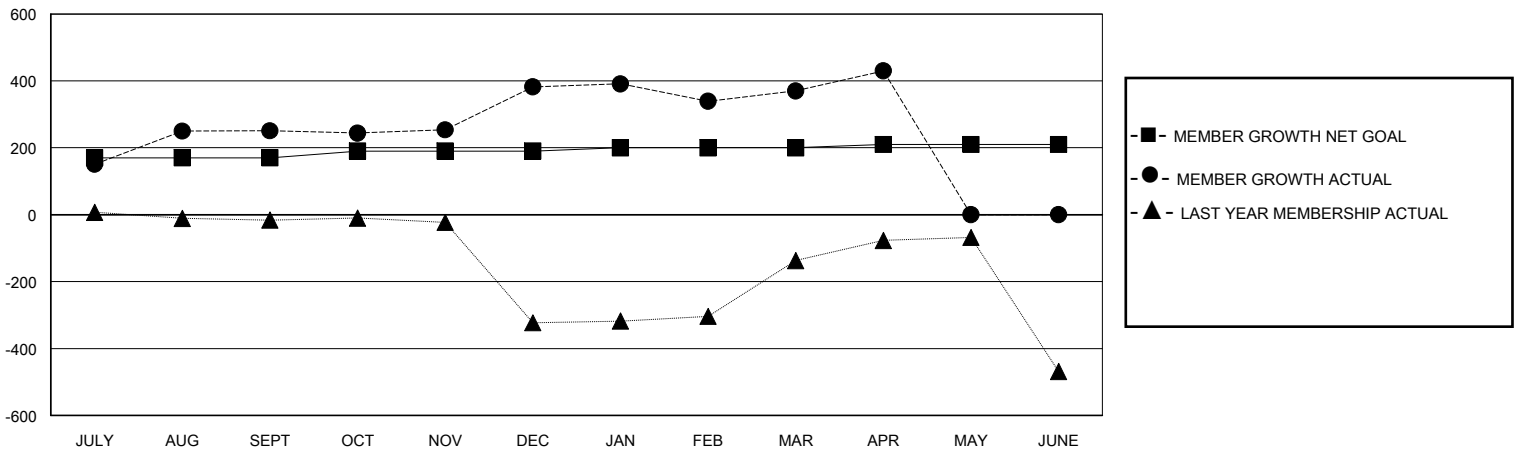
Clubs			
RESULTS FOR 2023-2024			
QUARTER	NEW CLUB GOAL	NEW CLUBS	DROPPED CLUBS
JULY/AUG/SEPT	2	2	0
OCT/NOV/DEC	2	12	2
JAN/FEB/MAR	1	1	3
APR/MAY/JUNE	0	1	0

Members			
RESULTS FOR 2023-2024			
QUARTER	MEMBER GROWTH NET GOAL	MEMBER GROWTH ACTUAL	DROPPED MEMBERS ACTUAL (including transfers)
JULY/AUG/SEPT	170	469	101
OCT/NOV/DEC	20	277	133
JAN/FEB/MAR	10	82	85
APR/MAY/JUNE	10	68	6

GOALS AND ACTUAL NEW CLUBS CUMULATIVE



GOALS AND ACTUAL MEMBERS CUMULATIVE



DROPPED CLUBS: 5	90 CLUBS OF 205 ADDED 1 OR MORE NEW MEMBERS	<b>GENDER DISTRIBUTION</b> MALE 2,351 (62.43%) FEMALE 1,415 (37.57%)
<b>DROPPED MEMBERS</b> DECEASED 12 CLUB CANCELLED 80 OTHER 233 TOTAL 325	<a href="#">CLICK HERE FOR CUMULATIVE MEMBERSHIP DATA</a>	TOTAL FAMILY UNIT MEMBERS 1,431 FAMILY MEMBERS PAYING HALF DUES 864